



A Better Start - putting children, families, and communities in the lead

The National Lottery Community Fund
Matt Riddell – Contract Manager



Email: Abetterstart@tnlcommunityfund.org.uk

The National Lottery Community Fund



Our year in numbers

In total
30,204 projects

we funded were active last year, at least one in every local authority bar the Isles of Scilly.

Our funding goes to the heart of what matters to people and communities



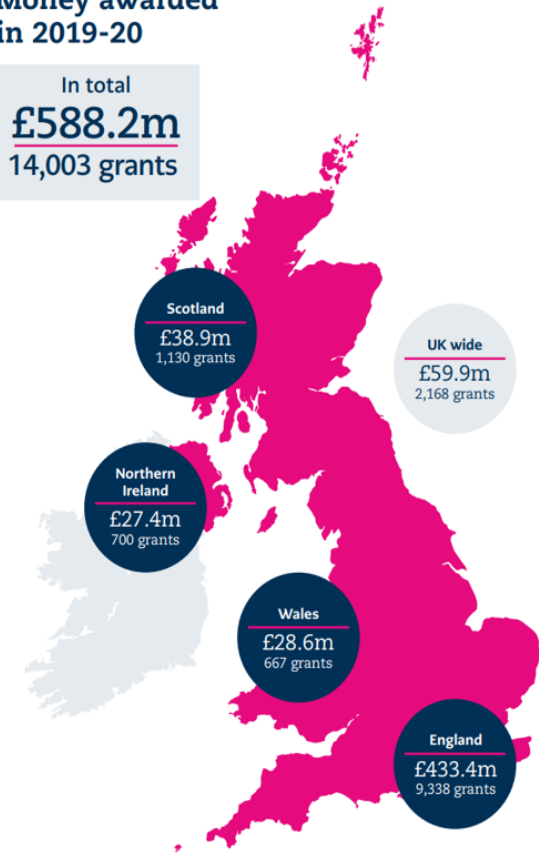
Individual projects may be counted in more than one category.

Often small amounts of money make the biggest difference to people and communities



Money awarded in 2019-20

In total
£588.2m
14,003 grants



The National Lottery Community Fund

When people are in the lead, communities thrive.

People understand what's needed in their communities better than anyone.

We listen, collaborate and fund so that good things happen.

That's why we're proud to award money raised by National Lottery players across the UK.

Our Principles



A Better Start

A Better Start aims to improve the life chances of babies and very young children by changing the way services are commissioned and delivered, involving parents as equal partners.

Social and emotional development

- Promote good attunement and attachment
- Address essential elements, for example neglect, maternal mental health issues and domestic violence.

Speech and Language Development

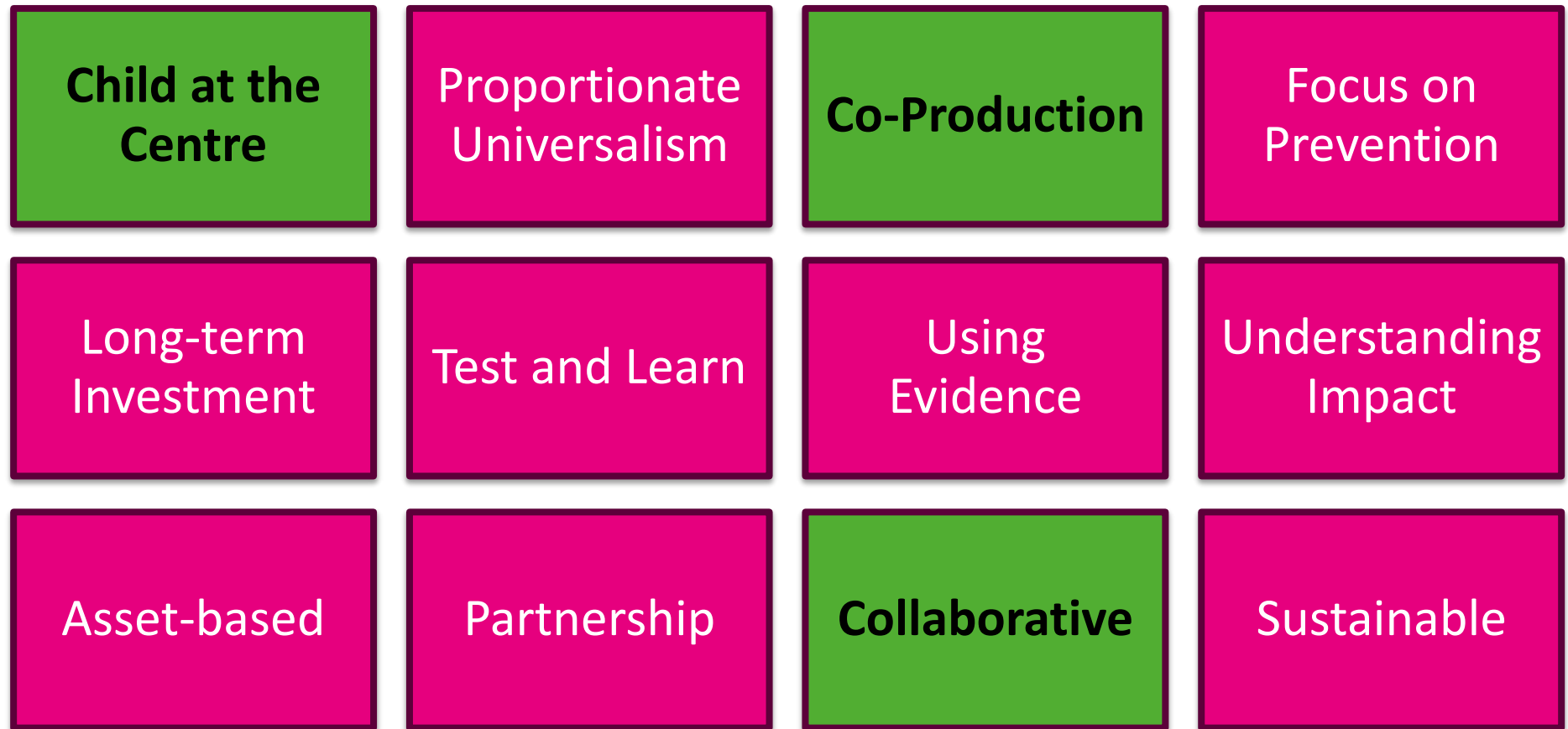
- Support parents to talk to, read to, sing to and praise their babies and toddlers
- Increase stimulation that leads to speech and vocabulary development

Nutrition

- Promote healthy perinatal, infant and child nutrition
- Prevent issues that result from a poor diet in pregnancy and first years of life such as poor oral health.



Characteristics of our approach



Role of the Fund



Enable

Support

Facilitate

Encourage

"I'm proud of us all because the leap project was created, the funding was there.... but it's us as the people and the parents who have actually tailored the service to make it be what it is andmake it effective".
[Lambeth Parent]



Find out more

-
- Email: Abetterstart@tnlcommunityfund.org.uk
- About our funded partnerships:

-
-
-
-
-

